

MONTHLY MEMBERSHIP PROGRESS REPORT

LOCATION INDIA

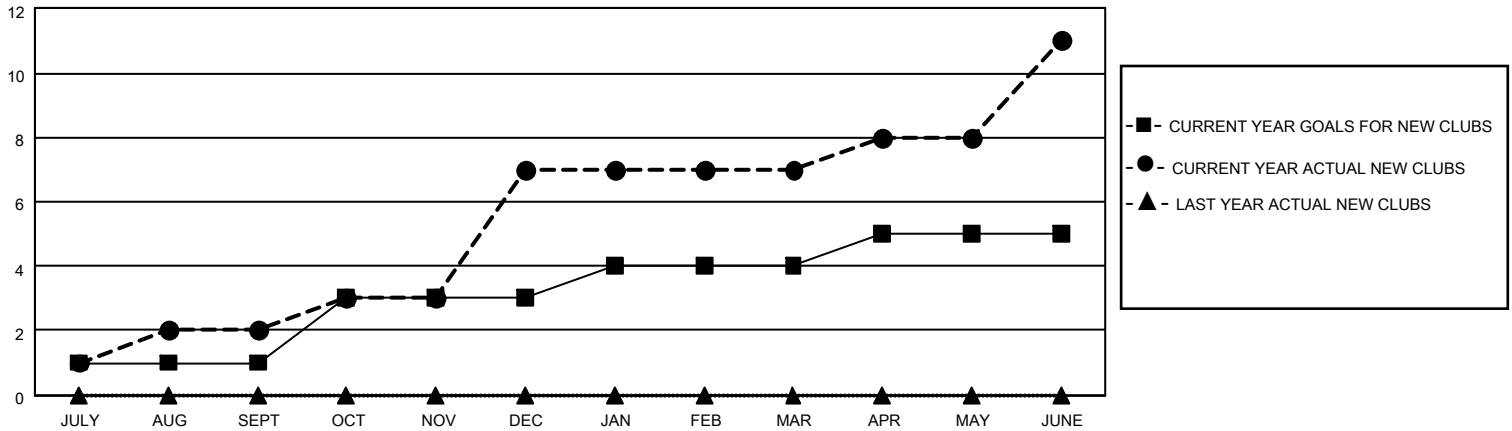
District 3231A3

Results as of: 6/30/2021

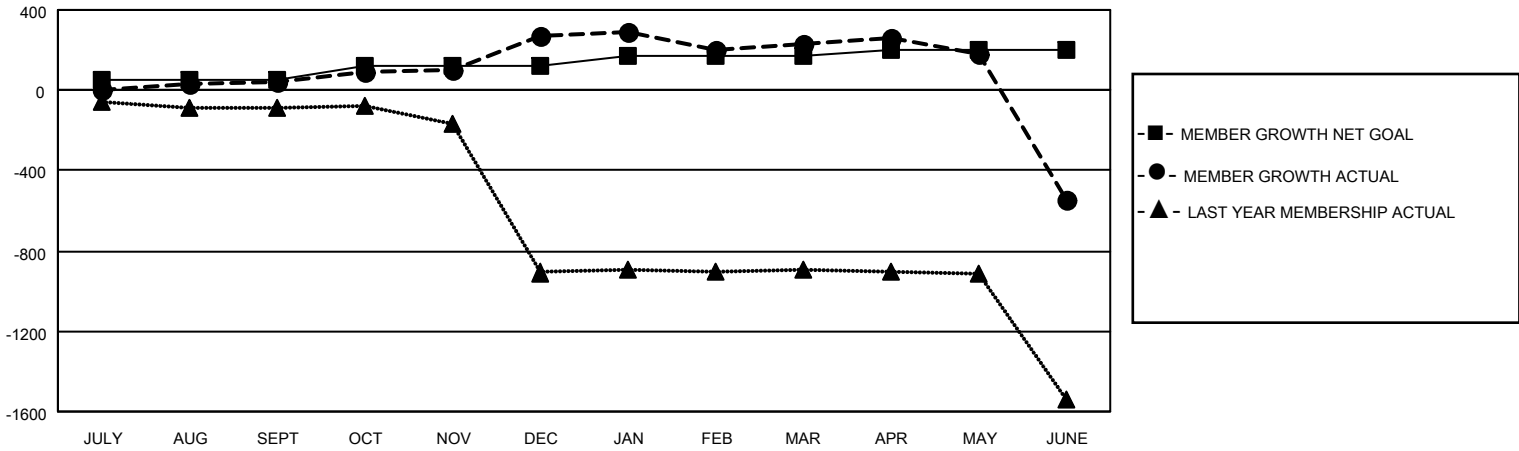
Clubs			
RESULTS FOR 2020-2021			
QUARTER	NEW CLUB GOAL	NEW CLUBS	DROPPED CLUBS
JULY/AUG/SEPT	1	2	0
OCT/NOV/DEC	2	5	1
JAN/FEB/MAR	1	0	8
APR/MAY/JUNE	1	4	0

Members			
RESULTS FOR 2020-2021			
QUARTER	MEMBER GROWTH NET GOAL	MEMBER GROWTH ACTUAL	DROPPED MEMBERS ACTUAL (including transfers)
JULY/AUG/SEPT	50	188	127
OCT/NOV/DEC	75	433	189
JAN/FEB/MAR	50	120	131
APR/MAY/JUNE	25	225	950

GOALS AND ACTUAL NEW CLUBS CUMULATIVE



GOALS AND ACTUAL MEMBERS CUMULATIVE



DROPPED CLUBS: 9	86 CLUBS OF 140 ADDED 1 OR MORE NEW MEMBERS	<u>GENDER DISTRIBUTION</u> MALE 3,990 (62.05%) FEMALE 2,440 (37.95%)
<u>DROPPED MEMBERS</u> DECEASED 62 CLUB CANCELLED 106 OTHER 1,229 <hr/> TOTAL 1,397	CLICK HERE FOR CUMULATIVE MEMBERSHIP DATA	TOTAL FAMILY UNIT MEMBERS 4,682 FAMILY MEMBERS PAYING HALF DUES 2,838